

1111 HAMPTON COURT SAN DIMAS 91773



This spacious family home offers four bedrooms and two baths, measuring 1,689 sq. ft. (approximately). The light-filled living room and dining area, offers a wood-burning fireplace, vaulted ceilings, and custom shutters. The tastefully updated kitchen offers custom counters, extra deep double sink, LED recessed lighting, pantry, a high-end dishwasher and a commercial style Viking® stove. The family room/den is located just steps from the kitchen with direct access to the private rear yard.

The master suite offers a walk-in closet and an adjacent master bath along with direct access to the rear yard and pool. Conveniently located down the hall are three additional bedrooms and a full bath. The laundry area is located in the attached two-car oversized garage and offers ample built-in cabinetry. The home also offers a spacious and private rear yard that includes an above ground, swim-in-place pool/spa, newer vinyl fencing and landscaped grounds. Other amenities offered are; updated double pane windows and doors, copper plumbing, updated auto. garage door, concrete tile roof, potential for RV or boat parking, multiple storage sheds and easy access to shops and transportation.

OFFERED AT **\$624,950** | mls.1111HamptonCourt.com



1111 HAMPTON COURT SAN DIMAS 91773

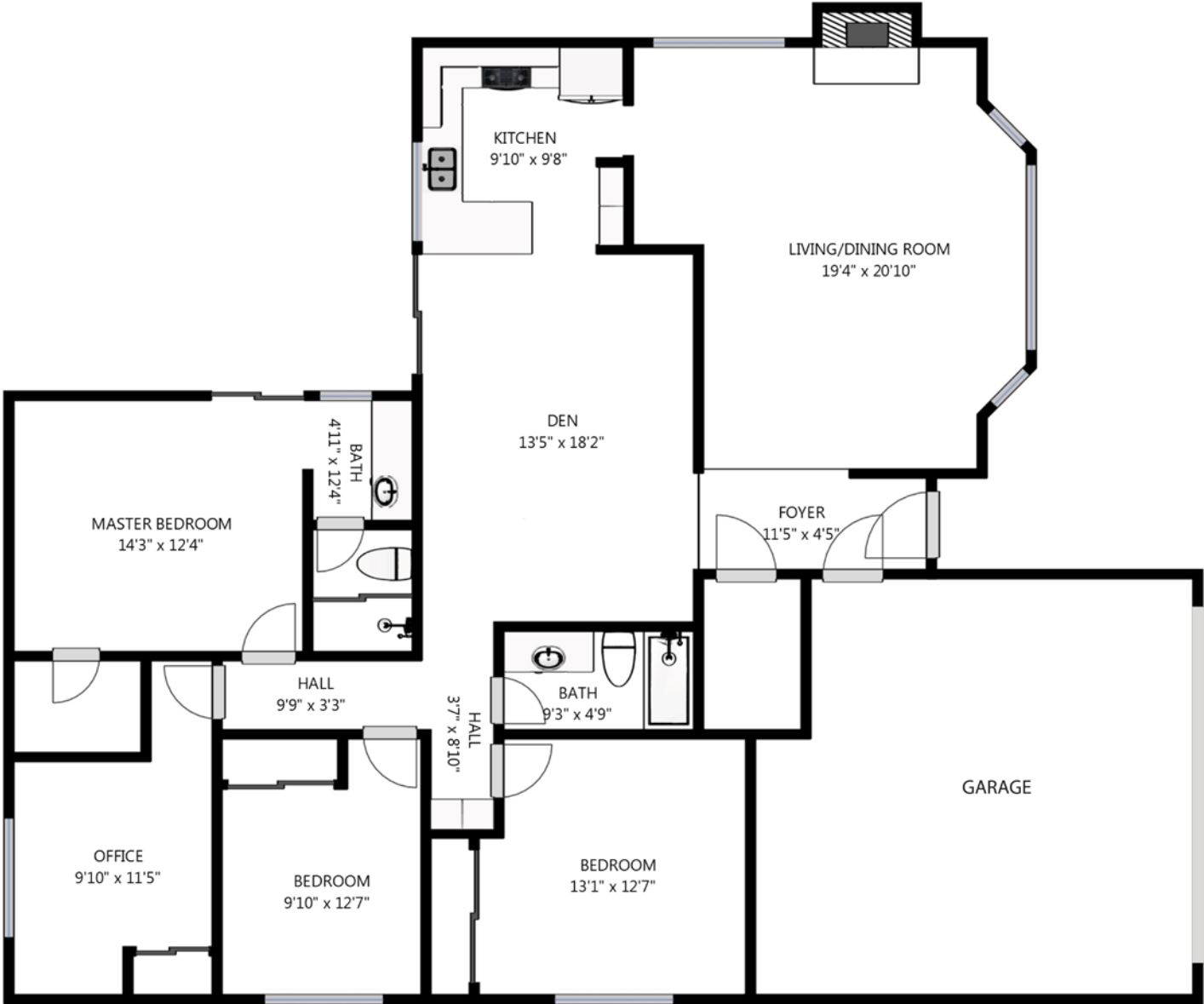


mls.1111HamptonCourt.com

- 4 Bedrooms & 2 Baths
- Home: 1,689 sq. ft.
- Lot: 8,213 sq. ft.
- Updated Windows
- Updated Kitchen
- High-End Appliances
- Swim-In-Place Pool/Spa
- Private Rear Yard
- RV/Boat Parking
- Central Air & Heat

Buyer is advised to verify that information through personal inspection with the appropriate professionals. Equal Housing Opportunity. ©2017 Dale Lauterback of Zuwerks Photography. 

1111 HAMPTON COURT SAN DIMAS 91773



mls.1111HamptonCourt.com

Buyer is advised to verify that information through personal inspection with the appropriate professionals. Floor plan by Matterport. Information deemed reliable but not guaranteed. Equal Housing Opportunity.

